

Product Guide

Thank you for purchasing the setup disk of Sysmac Studio (SYSMAC-SE200D).

Before Use

Components

This package includes the following components. Please check that all the components are included in the package.

- Product Guide (this guide) 2
(Be sure to read this guide before using the Sysmac Studio.) (Japanese/English)
- Setup Disks (DVD-ROM)..... 1 set
(Contain the Sysmac Studio Applications, the Operation Manuals and other setup data.) (DVD-ROM: 1disk)

About non-bundled handling to the product of manuals

The manuals are not bundled in this product by the viewpoint of the global environment protection. The manuals are stored on the Sysmac Studio setup disk (DVD-ROM) as PDF files, and can be referred to from the start menu after Sysmac Studio installation.

Installation/Uninstallation Procedure

For detailed installation/uninstallation procedures, refer to the Sysmac Studio Operation Manual on the DVD-ROM. The Sysmac Studio Operation Manual is a PDF file in the following directory:

\\Manuals\\English\\Sysmac Studio Version 1 OperationManual.pdf

Precautions when Installing the Sysmac Studio

- The Sysmac Studio cannot be installed from a network drive, such as a DVD drive or hard disk drive shared on a network. Always install the Sysmac Studio from a DVD drive on the computer onto which the software is being installed.

Precautions for Coexistence with CX-One

- The Sysmac Studio can be coexistent only with the CX-One Ver. 4.0 or higher.
- When installing the CX-One Ver. 4.00 to Ver. 4.21 and the Sysmac Studio on the same computer, be sure to install the CX-One first, and then the Sysmac Studio. When uninstalling them, please uninstall the Sysmac Studio first, and then the CX-One.
- For the CX-One Ver. 4.22 or higher, there is no restriction on the installation order.

Purchasing License

For Sysmac Studio, licenses are not included in the setup disk model (SYSMAC-SE200D).

Please purchase a model of Sysmac Studio licenses (SYSMAC-□E□□□L) separately for the number of licenses you need.

Auto Update Service

Sysmac Studio version 1 allows you to install Sysmac Studio updates released in the future through the Internet by using the Sysmac Studio Auto Update Service. To use this service, you must have a SYSMAC ID. To obtain a SYSMAC ID, perform the procedure in *User Registration Procedure* given below.

Preparations for Executing the Auto Update Service

- End all application programs running on Windows before executing the update.
- Execute the update while connected to the Internet.
- The update may fail if you are using a proxy server. If that happens, make the following setting (if you are using Internet Explorer).
 1. Select **Control Panel - Internet Options**.
 2. On the Advanced Tab Page, clear the *Use HTTP 1.1 through proxy connections* Option.

Executing the Auto Update Service

Select **All Programs - OMRON – Sysmac Studio – OMRON Automation Software Auto Update** from the Windows Start Menu. If a suitable update is available, proceed as instructed on the screen. If there is no update available, execution will end.

User Registration Procedure

When using the Sysmac Studio, confirm the descriptions on the Software License Agreement, which is included in each model of licenses. Then, be sure to perform user registration by any of the following methods.

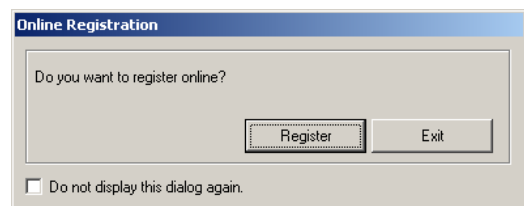
Online User Registration (Internet Connection Required)

Registration from URL described in Software License Agreement of Sysmac Studio

Start an Internet browser and access the URL described on the Software License Agreement. Then, OMRON website for online user registration will be displayed. Enter the information required for user registration according to the screen.

Registering from the Online Registration Dialog Box in Sysmac Studio

1. The Online Registration Dialog Box will be displayed after the computer is restarted upon completion of Sysmac Studio installation.
2. Click the **Register** Button. A browser will be started and connect you to the OMRON website for online user registration. (See note.)



Note: If the Exit Button is clicked to cancel online registration, the Online Registration Dialog Box will be displayed every time the Sysmac Studio is started.

3. Enter the information required for user registration according to the screen.
4. After completion of registration, registration confirmation will be sent to the email address input during the registration procedure.

Online Registration from the Sysmac Studio

The OMRON website for online user registration will be displayed when you start the Sysmac Studio and select **Online Registration** from the Help Menu.

Enter the information required for user registration according to the screen.

- Note:**
- Use the product key and license number given on the License Card included in each model of licenses.
 - Do not register more than once. For example, if you have returned the User Registration Postcard, do not register online.
 - The Online Registration Dialog Box may be displayed even if online registration has already been completed. If this happens, select the *Do not display this dialog again* option and click the **Exit** Button.

Using the User Registration Postcard

Enter the required information on the User Registration Postcard included in each model of Sysmac Studio licenses, put the License Seal for User Registration Postcard, and send the card.

Introduction of Activation (Advance Notice)

In the future versions of Sysmac Studio, license authentication (activation) will be required for installing or re-installing the Sysmac Studio.

The license authentication (activation) is an indispensable process to associate OMRON products that the customers have purchased with the computer to run the products. OMRON will prevent unauthorized use or copy of the software with this system.

When the license authentication (activation) is introduced in the future, you need to perform the license authentication (activation) procedures also for already-installed Sysmac Studio.

Please note that the Sysmac Studio can be used only for a limited time if you do not perform the license authentication (activation) procedures at that time.